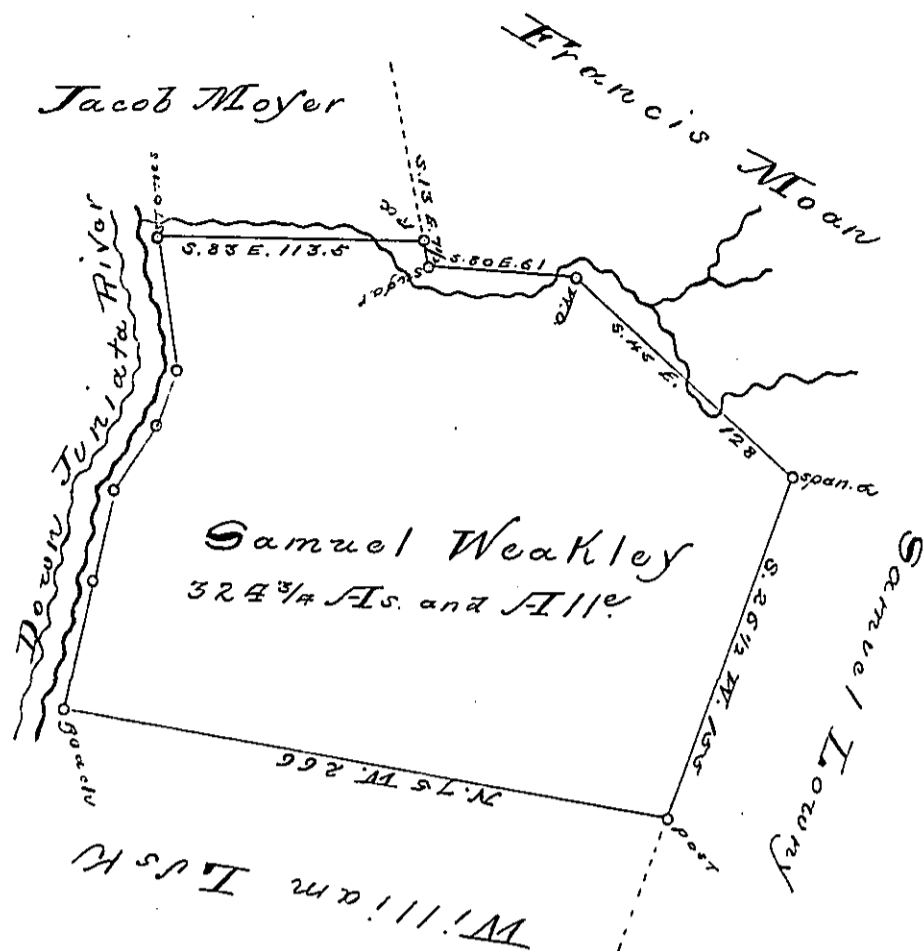


Course and Distances  
Down the River from  
A Beach to Stones.

N. 12 E. 57	Stones
N. 24 E. 42	
N. 43 E. 37	
N. 30 E. 23	
N. 2 W. 57	
210.	



Situate in Hopewell Township Bedford County containing 324 <sup>3</sup>/<sub>4</sub> Acres and allowance surveyed the 20<sup>th</sup> day of Dec. 1829 for Abraham Kerns in pursuance of a warrant for 400 Acres granted to Samuel Weakley dated the 19<sup>th</sup> day of Sept 1797.

Gabriel Heister Capt. }  
Surveyor General } James Piper Sg.

IN TESTIMONY that the above is a copy of the original remaining on file in the Department of Internal Affairs of Pennsylvania, made conformably to an Act of Assembly approved the 16th day of February, 1833, I have hereunto set my Hand and caused the Seal of said Department to be affixed at Harrisburg, this

twelfth day of September 1892.

*Thos. J. Stewart*  
Secretary of Internal Affairs